

KODAK Essential Universal Li-Ion Battery Charger UC-200

Battery Compatibility

Any rechargeable Li-Ion camera battery that will fit in the charger either horizontally or vertically (oversized batteries), and whose contacts engage the charger contacts, can be charged.

LED Indicator

Flashing Green Charging.

Solid Green Battery ready to use.

Flashing Red Charger error; let temperature normalize (see Operating Temperatures)

Solid Red Battery error; replace battery.

Approximate Battery Charge Times

	Battery mAh	With 1000 mA @ 5 V input	
		Charge mA	Charge Time (Hours)
3.6 or 3.7 V cells	700	700	1.1
	800	700	1.3
	1000	700	1.6
	1200	700	1.9
7.2 or 7.4 V batteries	1400	400	3.9
	2000	400	5.5
	2600	400	7.2

Specifications

Voltage:

Input— AC/DC Adapter: 100-240 V AC/50-60 Hz, 200 mA
DC Charger: 5V, up to 1000 mA

Output— AC/DC Adapter: 5.0 V, 1000 mA
DC Charger: 4.1 V, 700 mA; 8.2 V, 400 mA

Operating Temperatures:

32° F - 113° F (0° C - 45° C)

Charge Termination/Protection/Detection:

Maximum voltage; over and under temperature; current and voltage set points; time controller.

IMPORTANT SAFETY INSTRUCTIONS—

Save these instructions

• **DANGER—TO REDUCE THE RISK OF FIRE OR ELECTRICAL SHOCK, CAREFULLY FOLLOW THESE INSTRUCTIONS.**

• **DANGER—CHARGE ONLY LI-ION BATTERIES SPECIFICALLY MARKED AS RECHARGEABLE. OTHER TYPES OF BATTERIES MAY LEAK, RUPTURE, OR EXPLODE AND CAUSE PERSONAL INJURY AND DAMAGE.**

⚠ Rechargeable Li-Ion batteries only.

- **CAUTION:** Keep dry. Do not use extension cords with this product. Do not operate charger if it has been subjected to electrical or physical shock or other damage. Do not disassemble charger.
- The use of an accessory that is not recommended by Kodak may cause fire, electric shock, or injury. For approved accessories, visit www.kodak.com/go/accessories.
- This appliance is not intended for use by persons (including children) with reduced physical, sensory or mental capabilities, or lack of experience and knowledge, unless they have been given supervision or instruction concerning the use of the appliance by a person responsible for their safety.
- Children should be supervised to ensure that they do not play with the appliance.
- It is normal for batteries to become warm while charging.
- Use IEC 60950 certified ITE Power Supply.

FCC compliance and advisory

This equipment has been tested and found to comply with the limits for a Class B digital device, pursuant to Part 15 of the FCC Rules. These limits are designed to provide reasonable protection against harmful interference in a residential installation.

This equipment generates, uses, and can radiate radio frequency energy and, if not installed or used in accordance with the instructions, may cause harmful interference to radio communications. However, there is no guarantee that interference will not occur in a particular installation. If this equipment does cause harmful interference to radio or television reception, which can be determined by turning the equipment off and on, the user is encouraged to try to correct the interference by one or more of the following measures: 1) reorient or relocate the receiving antenna; 2) increase the separation between the equipment and the receiver; 3) connect the equipment to an outlet on a circuit different from that to which the receiver is connected; 4) consult the dealer or an experienced radio/TV technician for additional suggestions.

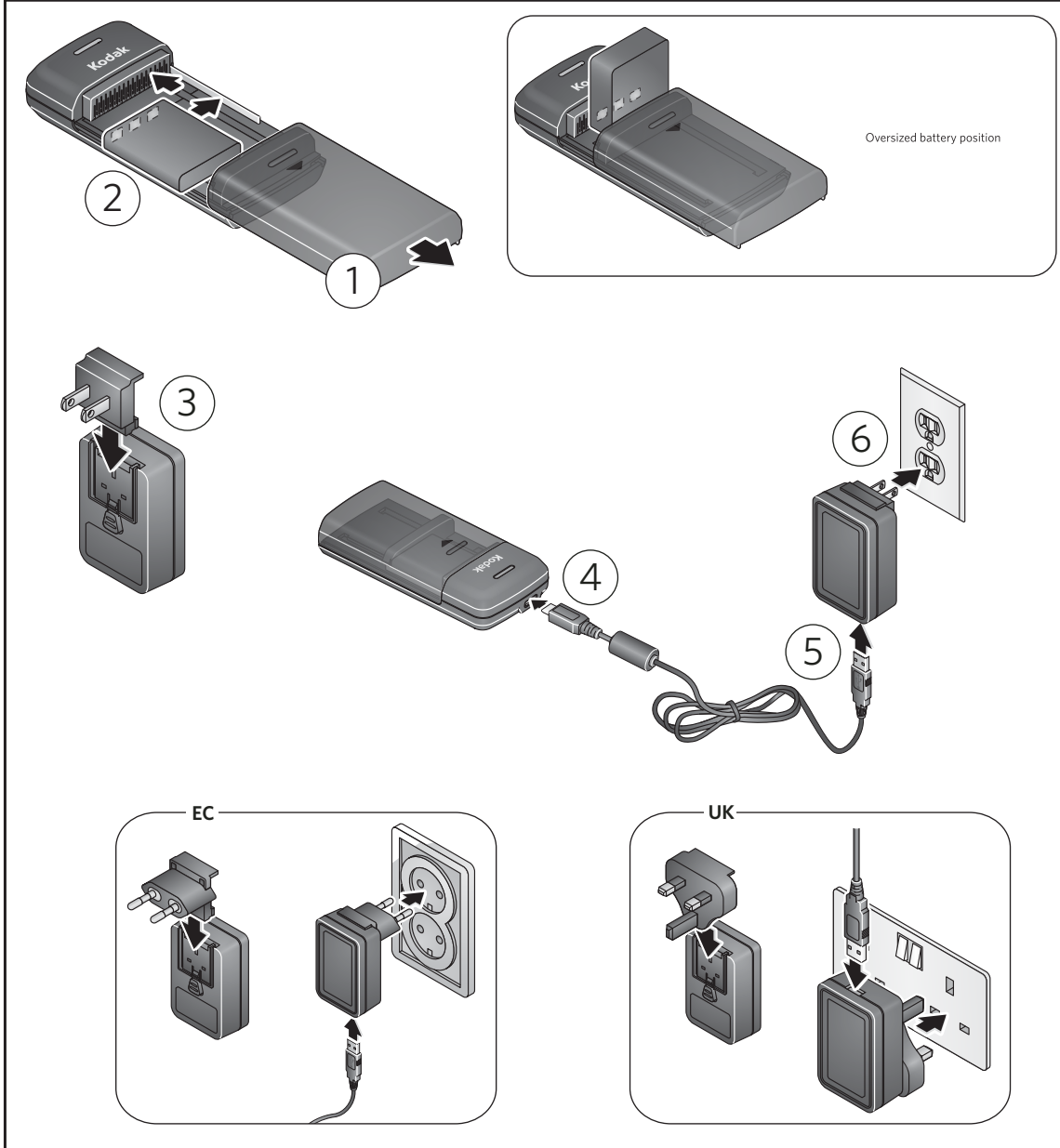
Any changes or modifications not expressly approved by the party responsible for compliance could void the user's authority to operate the equipment. Where shielded interface cables have been provided with the product or specified additional components or accessories elsewhere defined to be used with the installation of the product, they must be used in order to ensure compliance with FCC regulation.

The USB AC adapter complies with Part 15 of the FCC Rules. Operation is subject to the following two conditions: 1) This device may not cause harmful interference, and 2) this device must accept any interference received, including interference that may cause undesired operation.

Canadian DOC statement

DOC Class B compliance—This Class B digital apparatus complies with Canadian ICES-003.

Observation des normes-Class B—Cet appareil numérique de la classe B est conforme à la norme NMB-003 du Canada.



Waste Electrical and Electronic Equipment/Battery Disposal

In Europe: For human/environmental protection, it is your responsibility to dispose of this equipment and batteries at a collection facility established for this purpose (separate from municipal waste). For more information, contact your retailer, collection facility, or appropriate local authorities; or visit www.kodak.com/go/recycle. (Charger weight: 1.87 oz./53 g.)

Go to www.kodak.com/go/REACH for information about the presence of substances included on the candidate list according to article 59(1) of Regulation (EC) No. 1907/2006 (REACH).

Kodak

Made in China for
 Eastman Kodak Company
 Rochester, NY 14650 U.S.A.

©Eastman Kodak Company, 2011. MC/MR/TM: Kodak. 4H8720

www.kodak.com/go/accessories