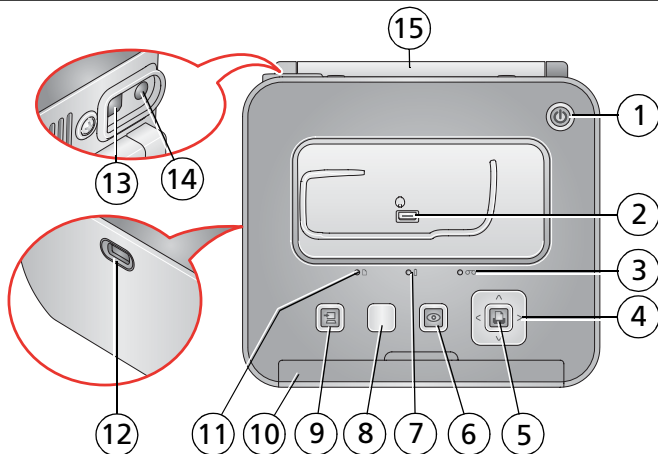





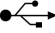


Overview

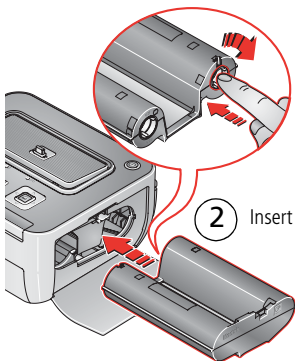


- | | |
|--|--|
| 1 Power button/light | 8 Print-layout button  |
| 2 Camera connector (for Kodak EasyShare camera or ImageLink print system compatible camera) | 9 Transfer button/light  |
| 3 Cartridge status indicator light | 10 Pull-out handle |
| 4  (4-way button) | 11 Paper status indicator light |
| 5 Print button/light  | 12 USB device connector |
| 6 Red-eye reduction button/light  | 13 USB connector (to computer)  |
| 7 Camera battery status light | 14 Power connector (DC-in) |
| | 15 Connector cover for optional battery |

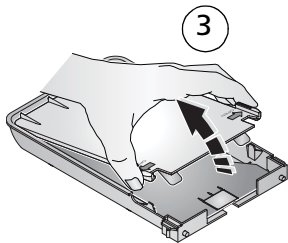
1 Load cartridge and paper

Use only Kodak color cartridge & photo paper kits , sold at www.kodak.com/go/accessories.

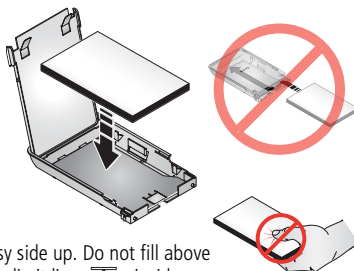
① Remove ribbon slack.




② Insert cartridge.

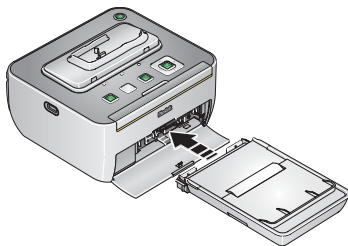


④

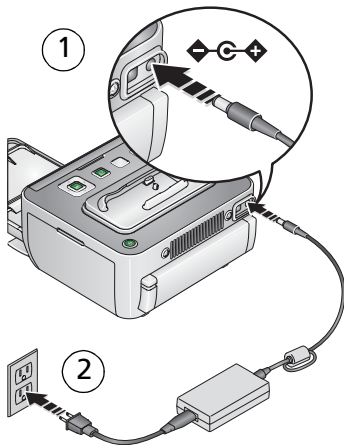


Glossy side up. Do not fill above paper-limit line, , inside paper tray (maximum 30 sheets).

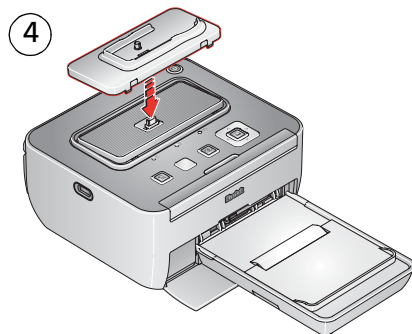
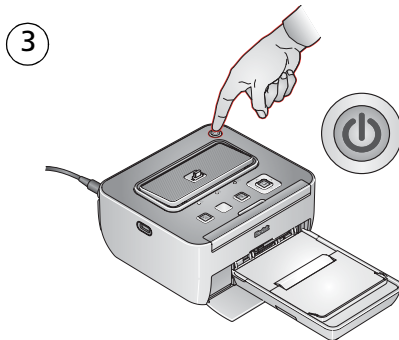
⑤



2 Connect camera insert and power



Your AC power adapter may not require assembly

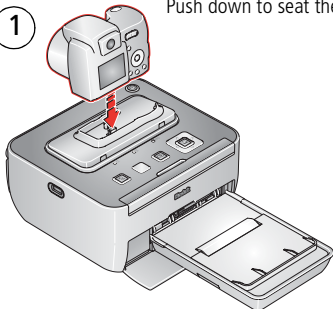


Custom camera insert included with your camera

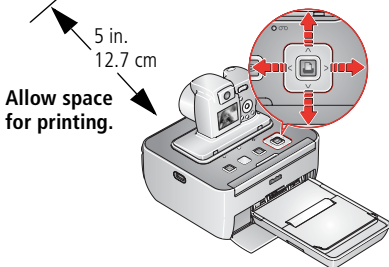
3 Dock camera and print

Note: To avoid cropping, use your camera's 3:2 Picture Size setting. (See your camera user's guide.)

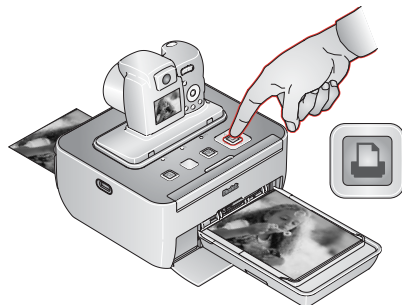
- 1 Push down to seat the connector.



- 2 Select pictures to print:
 Press $\blacktriangleleft/\blacktriangleright$ to locate a picture.
 Press $\blacktriangleup/\blacktriangledown$ to select print quantity.
 Repeat for each picture.



- 3 Press OK/Print. (Each picture makes 4 passes through the printer.)



IMPORTANT: During printing, do not pull out the print. The printer dock automatically ejects the finished print after the fourth pass.

4 Keep learning!

Congratulations!

You have:

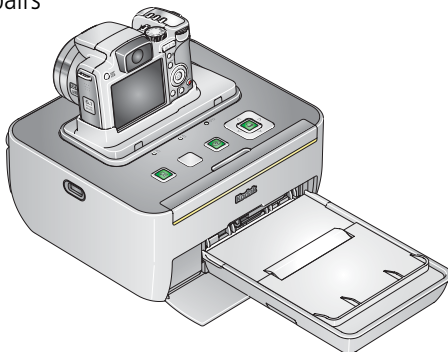
- set up your printer
- printed pictures

Keep learning!

Finish reading this book, so you can print and share your best pictures!

Visit www.kodak.com/go/g600support and www.kodak.com/go/easysharecenter for:

- the extended user's guide
- interactive troubleshooting and repairs
- interactive tutorials
- FAQs
- downloads
- accessories
- projects, printing tips
- product registration

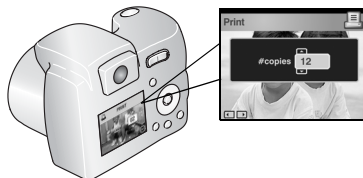


Select pictures on camera and print*

- 1 Press the Share button.



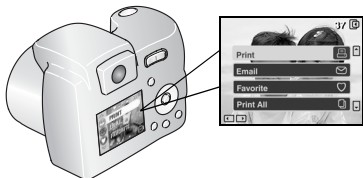
- 4 Press ▲/▼ to select copies, then press OK.



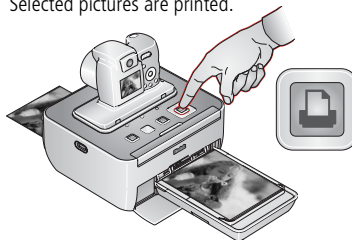
Repeat steps 2-4 to tag more pictures.

- 2 Press ◀/▶ to locate a picture.

- 3 Highlight Print, then press OK.

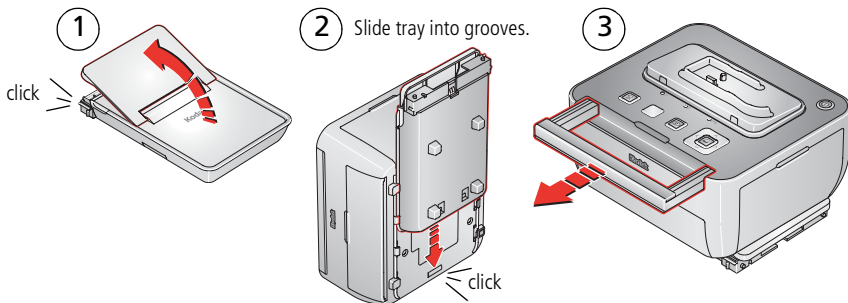


- 5 Dock camera, then press Print.
Selected pictures are printed.



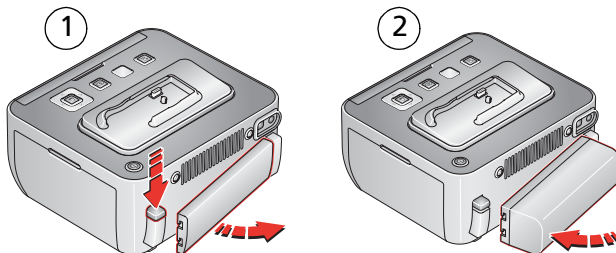
* For Kodak EasyShare cameras only. For other brands of ImageLink system compatible cameras, see your camera user's guide.

Take the printer dock with you



Optional battery installation

www.kodak.com/go/accessories






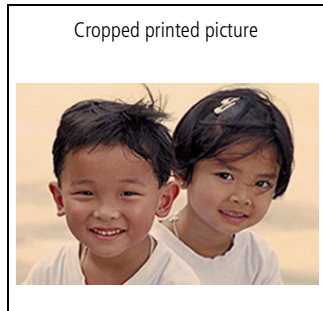
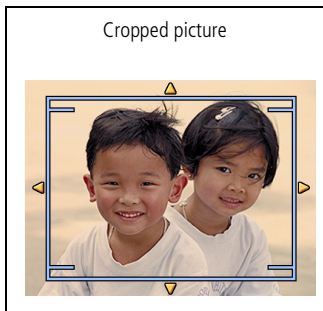
Battery charges when printer dock is plugged in.

Blinking green = Battery charging

Steady green = Charging complete

Crop pictures on camera before printing*

- 1 Press the Review button, then press  to locate a picture.
- 2 Press the Menu button, highlight Crop, then press OK.
- 3 Press the Telephoto/Wide (T/W) buttons (on the camera) to size the crop box.
Press   to move the crop box, then press OK.
- 4 Follow the screen prompts.
Note: The original picture is saved.



* For Kodak EasyShare digital cameras only. For other brands of ImageLink system compatible cameras, see the camera user's guide.

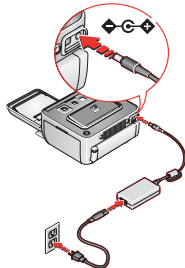
Transfer pictures, print from a computer

IMPORTANT: Load the software before connecting the printer dock to the computer.

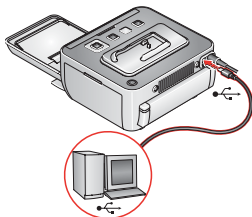
- ① Load software, then follow the screen prompts.




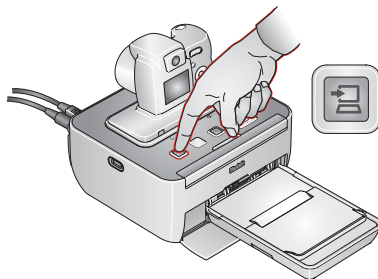
- ②



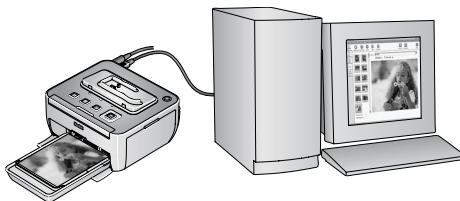
- ③



- ④ Dock camera, then press  to transfer pictures to your computer.



- ⑤ Print using EasyShare software or other application.



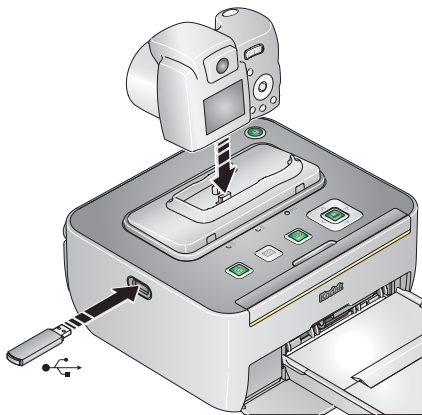
Print from a compatible USB device

USB flash drive:

- 1 You must dock your camera to review and print pictures from a USB flash drive.
- 2 To print, see page 4.

PictBridge compatible device:

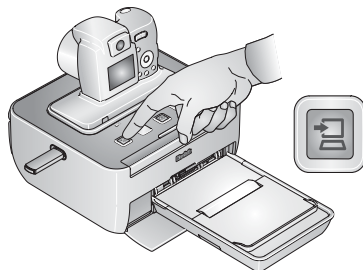
To print, see your device user's guide.



Transfer pictures to a USB flash drive

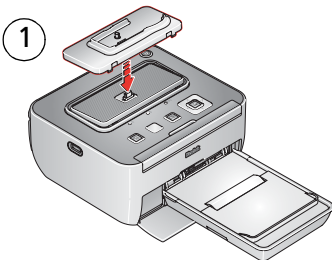
Copy one or all the pictures from your camera to a USB flash drive.

- 1 Press the Transfer button.
- 2 Follow the screen prompts.

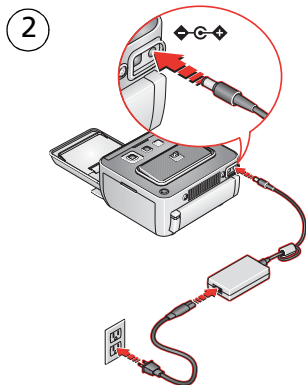
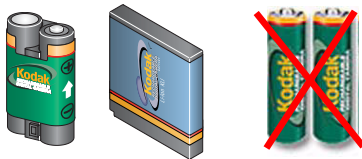


Charge the camera battery

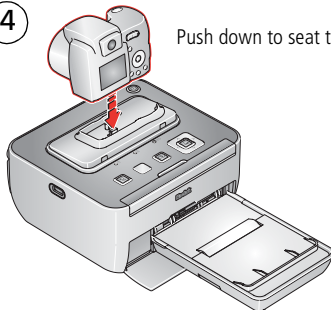
Note: Not all cameras are compatible for charging on the G600 printer dock. See your camera user's guide for dock compatibility.



- 3 Load only a Kodak Ni-MH rechargeable digital camera battery (KAA2HR), or a Kodak Li-Ion rechargeable digital camera battery into the camera (3 hour charging).



- 4 Push down to seat the connector.



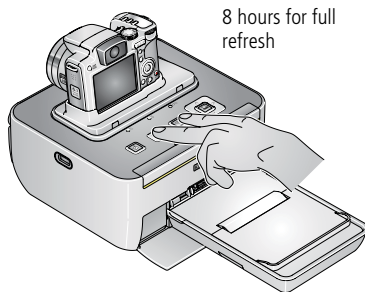
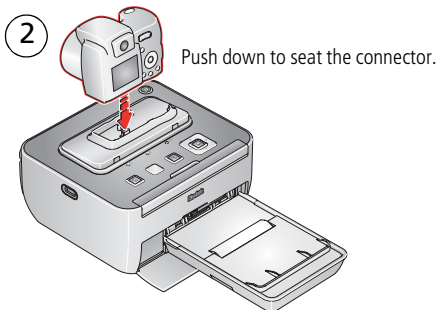
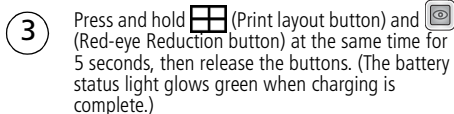
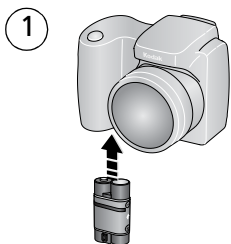
The camera is now powered by the printer dock instead of the camera battery. Leave the camera docked to maintain the charge.

Purchase batteries and accessories at a retailer of Kodak products, or visit www.kodak.com/go/accessories.

Refresh the camera battery



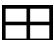

If you are getting fewer than 20 pictures per charge, you may need to refresh the battery. The refresh cycle completely discharges the battery, then fully charges it. Allow up to 8 hours (or overnight) for a full refresh.

IMPORTANT: The battery refresh feature is intended for use with the Kodak Ni-MH rechargeable digital camera battery (KAA2HR) only. Li-Ion batteries do not require refreshing.



Change the printed picture layout

- Follow the steps (except for Press Print) to print from your digital camera or PictBridge compatible device. See page 6.
 Note: You can only change the picture layout if a device with a display screen is docked to your printer dock.
- Press the Print-layout button repeatedly to select a picture layout:

| Picture Layout setting | Number and size of prints per sheet |
|--|---|
|  1-up (full photo) | One 4 x 6 in. (102 x 152 mm) picture |
|  2-up | Up to two 2.1 x 3.3 in. (54 x 85 mm) pictures |
|  4-up (wallet size) | Up to four 2 x 3 in. (51 x 76 mm) pictures |
|  9-up (mini photo) | Up to nine 1.3 x 2 in. (34 x 51 mm) pictures |

Note: A panoramic picture prints on multiple sheets if you select the 1-up picture layout setting.

To print duplicate copies on the same sheet, make sure the print quantity you choose matches the number of prints in the picture layout you choose.

- Press  (Print button) to begin printing.

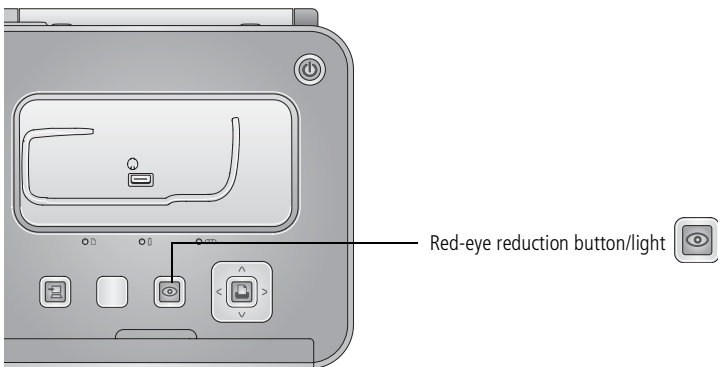
IMPORTANT: The printer dock automatically ejects the finished print after the fourth pass. Do not pull out the print.

Reduce red eye in your prints

Your printer dock automatically detects and corrects red eye in your subjects before you print your pictures.

- Your printer dock defaults to red-eye reduction being always on, and the Red-eye reduction button/light glows green.
- The Red-eye reduction button is disabled when printing from a computer. If printing from a computer (see page 9), make sure Kodak EasyShare software is installed on the computer.
- Your printer dock may apply red-eye reduction to an area such as red-painted fingernails, which darkens the area in your print. In this case, turn off red-eye reduction.
- To turn red-eye reduction off, press the Red-eye reduction button.
- To change the red-eye reduction default to off, press and hold the Red-eye reduction button for 5 seconds.



The Red-eye reduction light blinks, then turns off.

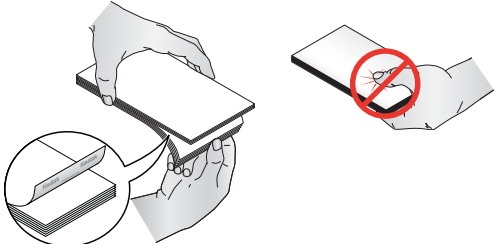



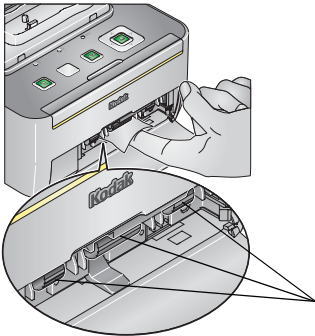
1

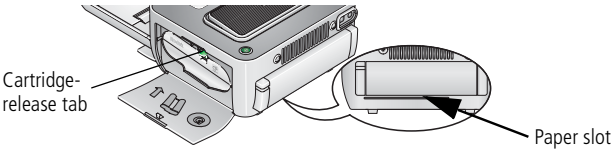

Solving printer dock problems

For step-by-step product support, visit www.kodak.com/go/g600support and select Interactive Troubleshooting & Repairs.

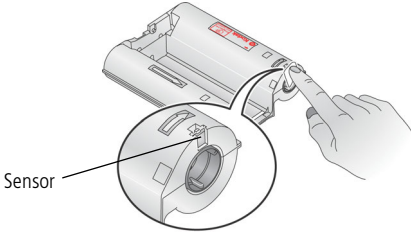
IMPORTANT: Use only Kodak color cartridge and photo paper kits with the  symbol. Do not use inkjet paper. Do not load more than 30 sheets of paper (see upper limit line  inside tray).

| If... | Try the following |
|---|--|
| Multiple sheets of paper are pulled through the printer | <ol style="list-style-type: none"> 1 Remove the paper tray (page 2). 2 Remove the paper supply from the tray. Carefully “fan” the paper to keep the sheets from sticking together. <div style="text-align: center;">  </div> 3 Reload the paper tray (page 2). 4 Re-install the paper tray, then press  to resume printing. |

| If... | Try the following |
|---------------------|---|
| Paper does not feed | <p data-bbox="306 184 564 210">Clean the paper-feed rollers:</p> <ol data-bbox="306 221 898 376" style="list-style-type: none"><li data-bbox="306 221 898 274">1 Remove the paper tray from the printer dock, and leave the paper-tray door open.<li data-bbox="306 285 898 338">2 Lightly moisten a lint-free cloth with water. (Do not use cotton swabs, harsh or abrasive cleaners, or organic solvents.)<li data-bbox="306 348 898 376">3 Wipe clean the surface of the paper-feed rollers.  <ol data-bbox="306 732 934 855" style="list-style-type: none"><li data-bbox="306 732 934 785">4 Advance the paper-feed rollers using the moistened lint-free cloth, as necessary, and continue cleaning.<li data-bbox="306 795 934 855">5 Allow the paper-feed rollers to fully dry before reconnecting the power and inserting the paper-tray. |

| If... | Try the following |
|---|---|
| <p>Printer is jammed (Paper or color-cartridge jam message appears on the camera or computer)</p> | <ol style="list-style-type: none"> 1 Remove the paper tray (page 2). 2 Remove the paper supply from the paper tray. Carefully “fan” the paper to keep the sheets from sticking together. 3 Reload then re-install the paper tray (page 2). 4 Disconnect the printer dock power for 10 seconds, then reconnect the power. (Paper should eject from the rear of the printer dock.) 5 Remove the ejected paper. <p>IMPORTANT: <i>Always check the paper slot on the back of the printer dock for jammed paper.</i></p>  <p>IMPORTANT: <i>The cartridge may lock in place if there is a paper jam. Do not attempt to remove the cartridge without first clearing the paper jam. Make sure there are no paper jam messages on your camera or computer screen before attempting to remove the cartridge.</i></p> <p>If there is a cartridge jam:</p> <ul style="list-style-type: none"> ■ Push up on the green cartridge-release tab to release the cartridge. Remove the cartridge. ■ Remove any slack from the ribbon. Reinstall the cartridge. <ol style="list-style-type: none"> 6 Press  to resume printing. |

Solving printer dock problems

| If... | Try the following |
|---|--|
| <p>After installing a new color cartridge, the following error message appears: "Empty cartridge. Replace color cartridge, then press Print".</p> <p>(The printer does not recognize the color cartridge)</p> | <ol style="list-style-type: none">1 Open the cartridge door.2 Push up on the green cartridge-release tab.3 Remove the cartridge.4 Reinsert the cartridge.5 Press Print. <p>If the error message reappears:</p> <ul style="list-style-type: none">■ Repeat steps 1-3 above, then clean the cartridge sensor with a dry lint-free cloth.  <ul style="list-style-type: none">■ Reinsert the cartridge, then press Print. |

Kodak photo paper kits are sold separately at a retailer of Kodak products, or visit www.kodak.com/go/accessories.

Important Safety Instructions



CAUTION:

Do not disassemble this product; there are no user-serviceable parts inside. Refer servicing to qualified service personnel. Do not expose this product to liquid, moisture, or extreme temperatures. Kodak AC adapters and battery chargers are intended for indoor use only. The use of controls, adjustments, or procedures other than those specified herein may result in exposure to shock and/or electrical or mechanical hazards. If the LCD breaks, do not touch the glass or liquid. Contact Kodak customer support. When removing the battery, allow it to cool; it may be hot.

- Read and follow all warnings and instructions supplied by the battery manufacturer.
- Use only batteries approved for this product to avoid risk of explosion.
- Keep batteries out of the reach of children.
- Do not allow batteries to touch metal objects, including coins. Otherwise, a battery may short circuit, discharge energy, become hot, or leak.
- Do not disassemble, install backward, or expose batteries to liquid, moisture, fire, or extreme temperature.
- Remove the battery when the product is stored for an extended period of time. In the unlikely event that battery fluid leaks inside the product, contact Kodak customer support.
- In the unlikely event that battery fluid leaks onto your skin, wash immediately with water and contact your local health provider. For additional health-related information, contact your local Kodak customer support.
- Dispose of batteries according to local and national regulations.
- Do not charge non-rechargeable batteries. For more information on batteries, see <http://www.kodak.com/go/batterytips>.
- Service agreements may be available in your country. Contact a dealer of Kodak products for more information.

Limited warranty

Kodak warrants Kodak consumer electronic products and accessories ("Products"), excluding batteries, to be free from malfunctions and defects in both materials and workmanship for one year from the date of purchase. Retain the original dated sales receipt. Proof of the date of purchase will be required with any request for warranty repair.

Warranty service is only available from within the country where the Products were originally purchased. You may be required to ship Products, at your expense, to the authorized service facility for the country where the Products were purchased.

Kodak will repair or replace Products if they fail to function properly during the warranty period, subject to any conditions and/or limitations stated herein. Warranty service will include all labor as well as any necessary

Appendix

adjustments and/or replacement parts. If Kodak is unable to repair or replace a Product, Kodak will, at its option, refund the purchase price paid for the Product provided the Product has been returned to Kodak along with proof of the purchase price paid. Repair, replacement, or refund of the purchase price are the sole remedies under the warranty.

If replacement parts are used in making repairs, those parts may be remanufactured, or may contain remanufactured materials. If it is necessary to replace the entire Product, it may be replaced with a remanufactured Product. Remanufactured Products, parts and materials are warranted for the remaining warranty term of the original Product, or 90 days after the date of repair or replacement, whichever is longer. This warranty does not cover circumstances beyond Kodak's control. This warranty does not apply when failure is due to shipping damage, accident, alteration, modification, unauthorized service, misuse, abuse, use with incompatible accessories or attachments (such as third party ink or ink tanks), failure to follow Kodak's operation, maintenance or repacking instructions, failure to use items supplied by Kodak (such as adapters and cables), or claims made after the duration of this warranty.

Kodak makes no other express or implied warranty for this product, and disclaims the implied warranties of merchantability and fitness for a particular purpose. In the event that the exclusion of any implied warranty is ineffective under the law, the duration of the implied warranty will be one year from the purchase date or such longer period as required by law.

The option of repair, replacement, or refund is Kodak's only obligation. Kodak will not be responsible for any special, consequential or incidental damages resulting from the sale, purchase, or use of this product regardless of the cause. Liability for any special, consequential or incidental damages (including but not limited to loss of revenue or profit, downtime costs, loss of the use of the equipment, cost of substitute equipment, facilities or services, or claims of your customers for such damages resulting from the purchase, use, or failure of the Product), regardless of cause or for breach of any written or implied warranty is expressly disclaimed.

Your rights

Some states or jurisdictions do not allow exclusion or limitation of incidental or consequential damages, so the above limitation or exclusion may not apply to you. Some states or jurisdictions do not allow limitations on how long an implied warranty lasts, so the above limitation may not apply to you.

This warranty gives you specific rights, and you may have other rights which vary from state to state or by jurisdiction.

Outside the United States and Canada

In countries other than the United States and Canada, the terms and conditions of this warranty may be different. Unless a specific Kodak warranty is communicated to the purchaser in writing by a Kodak company, no warranty or liability exists beyond any minimum requirements imposed by law, even though defect, damage, or loss may be by negligence or other act.

FCC compliance and advisory



Kodak EasyShare G600 printer dock

This equipment has been tested and found to comply with the limits for a Class B digital device, pursuant to Part 15 of the FCC Rules. These limits are designed to provide reasonable protection against harmful interference in a residential installation.

This equipment generates, uses, and can radiate radio frequency energy and, if not installed or used in accordance with the instructions, may cause harmful interference to radio communications. However, there is no guarantee that interference will not occur in a particular installation.

If this equipment does cause harmful interference to radio or television reception, which can be determined by turning the equipment off and on, the user is encouraged to try to correct the interference by one or more of the following measures: 1) reorient or relocate the receiving antenna; 2) increase the separation between the equipment and the receiver; 3) connect the equipment to an outlet on a circuit different from that to which the receiver is connected; 4) consult the dealer or an experienced radio/TV technician for additional suggestions. Any changes or modifications not expressly approved by the party responsible for compliance could void the user's authority to operate the equipment. Where shielded interface cables have been provided with the product or specified additional components or accessories elsewhere defined to be used with the installation of the product, they must be used in order to ensure compliance with FCC regulation.

Australian C-Tick



Canadian DOC statement

DOC Class B Compliance—This Class B digital apparatus complies with Canadian ICES-003.

Observation des normes-Class B—Cet appareil numérique de la classe B est conforme à la norme NMB-003 du Canada.

Waste Electrical and Electronic Equipment labeling



In the European Union, do not discard this product as unsorted municipal waste. Contact your local authorities or go to www.kodak.com/go/recycle for recycling program information.

Korean Class B ITE

이 기기는 가정용으로 전자파적합등록을 한 기기로서 주거지역에서는 물론 모든 지역에서 사용할 수 있습니다.

VCCI Class B ITE

この装置は、情報処理装置等電波障害自主規制協議会（VCCI）の基準に基づいたクラスB情報技術装置です。この装置は、家庭環境で使用することを目的としていますが、この装置がラジオやテレビジョン受信機に近接して使用されると、受信障害を引き起こすことがあります。
取扱説明書に従って正しい取り扱いをして下さい。

Chinese RoHS

环保使用期限 (EUP)

在中国大陆，该值表示产品中存在的任何危险物质不得释放，以免危及人身健康、财产或环境的时间期限（以年计）。该值根据操作说明中所规定的产品正常使用而定。

| 有毒有害物质或元素名称及含量标识表 | | | | | | |
|---|-----------|---|---|-----|------|-------|
| 部件名称 | 有毒有害物质或元素 | | | | | |
| | 铅 | 汞 | 镉 | 六价铬 | 多溴联苯 | 多溴二苯醚 |
| 数码相机电路板元件 | × | ○ | ○ | ○ | ○ | ○ |
| ○：表示该有毒有害物质在该部件所有均质材料中的含量均在SJ/T 11363-2006规定的限量要求以下。 ×：表示该有毒有害物质至少在该部件的某一均质材料中的含量超出SJ/T 11363-2006规定的限量要求。 | | | | | | |



USB 数据线



音频/视频电缆

Kodak

Eastman Kodak Company

Rochester, New York 14650

© Eastman Kodak Company, 2007

Kodak, EasyShare, and ImageLink are trademarks of Eastman Kodak Company.

P/N 4J6188_en